



Welcome to Year 11 Partnership Evening 2024



GCSE results Day is 10 months away!





Best Results Ever



This evening...

- Key dates
- The importance of attendance
- Edulink
- College Applications
- What your daughter's grades mean going forwards
- How to support your daughter with revision



Key dates

Now	Year 11 College Application process begins and ends on 24th November
Friday 22nd November	PPEs begin ALL SUBJECTS
Monday 13th January	Year 11 Parents'/Carers' evening (3-6pm)
Monday 24th February	PPEs begin for English, Maths and Science
Monday 6th May	GCSE exams begin

The exams will continue until Wednesday 25th June 2025 and it is important that your daughter is available to sit her exams until this date

Thursday 21st August RESULTS DAY!



Attendance

Every lesson is an opportunity.

In order for your daughter to progress, she needs to be in school, and in lessons on time.

If your daughter misses days, lessons, or is often late to lessons, they are missing out on learning and there will be gaps in their **knowledge**.

Student A

Qualification Name	Grade
English Literature - GCSE	4
Math	5
	54
	54
	3
Religion	4
Business	
English	

Student A achieved grades 3, 4 and 5

Student B



Qualification Name	Grade
English Language - GCSE	7
Math	7
	7
	6
	65
	7
English	7

Student B achieved grades 5, 6 and 7

What made the biggest difference?

Y11 attendance = 72.6%

Y11 attendance = 98.7%



EduLink

- Track Attendance
- Behaviour concerns
- Track your daughter's homework
- WRAPS
- Progress reports
- Change of details easily updated





College Applications

You will find the entry requirements for college in the pack you have been provided tonight. **We are over subscribed. We had 450 applications for 180 places.**

You also have your daughter's projected grades in front of you.

When applying to colleges your daughter needs to choose the courses based on her projected grades.

Each college will have slightly different criteria – this can be found on their websites!



Whalley Range
Sixth Form College

Sixth Form Open Evening

2024

Monday 18th November from 4:30-7:00pm



Tickets Available Now!



Student A

This student has 6 grades at 5+, with a 4+ in Maths and English and 2 at grade 6+. Therefore, she can apply for the A level pathway if she likes.

Subject	June Pre Public Examination	Projected grade
English Language GCSE	Grade 6	Grade 7
English Literature GCSE	Grade 3	Grade 5
German GCSE	Grade 5	Grade 6
History GCSE	Grade 3	Grade 5
Mathematics GCSE	Grade 4	Grade 4
Physical Education		
Psychology GCSE	Grade 6	Grade 5
Religious Studies GCSE	Grade 6	Grade 7



Student B

This student has 2 grades at 5+, with a 4+ English but NOT in maths. Therefore, she can't apply for a Level 3 pathway and will need to apply for a Level 2 pathway - a vocational course such as Business or Health and Social Care .

Subject	June Pre Public Examination	Projected grade
English Language <i>GCSE</i>	Grade 6	Grade 7
English Literature <i>GCSE</i>	Grade 1	Grade 4
History <i>GCSE</i>	Grade 3	Grade 5
Health and Social Care <i>BTEC Tech Award</i>		Level 1 Pass
Mathematics <i>GCSE</i>	Grade 3	Grade 3
Physical Education		
Religious Studies <i>GCSE</i>	Grade 2	Grade 4
Science (Combined) <i>GCSE Double Award</i>	Grade 3	Grade 3

College Applications: Maths and English

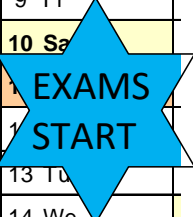


Maths and English are
the **GATEWAY** grades



How to help your daughter prepare for the year ahead

2024			2025				
October	November	December	January	February	March	April	May
1 Tu		1 Su		1 Sa	1 Sa	1 Tu	1 Th
2 We		2 Mo		2 Su	2 Su	2 We	2 Fr
3 Th		3 Tu		3 Mo ⁶	3 Mo ¹⁰	3 Th	3 Sa
4 Fr	4 Mo ⁴⁵	4 We		4 Tu	4 Tu	4 Fr	4 Su
5 Sa	5 Tu	5 Th		5 We	5 We		5 Mo ^{Early May Bank Hol.}
6 Su	6 We		6 Mo ²	6 Th	6 Th		6 Tu ¹⁹
7 Mo ⁴¹	7 Th	7 Sa	7 Tu	7 Fr	7 Fr		7 We
8 Tu	8 Fr	8 Su	8 We	8 Sa	8 Sa		8 Th
9 We	9 Sa	9 Mo	9 Th	9 Su	9 Su		9 Fr
10 Th	10 Su	10 Tu	10 Fr	10 Mo ⁷	10 Mo ¹¹		10 Sa
11 Fr	11 Mo ⁴⁶	11 We	11 Sa	11 Tu	11 Tu		11 Su
12 Sa	12 Tu	12 Th	12 Su	12 We	12 We		12 Fr
13 Su	13 We	13 Fr	13 Mo ³	13 Th	13 Th		13 Tu
14 Mo ⁴²	14 Th	14 Sa	14 Tu	14 Fr	14 Fr		14 We
15 Tu	15 Fr	15 Su	15 We		15 Sa		15 Th
16 We	16 Sa	16 Mo ⁵¹	16 Th		16 Su		16 Fr
17 Th	17 Su	17 Tu	17 Fr		17 Mo ¹²		17 Sa
18 Fr	18 Mo ⁴⁷	18 We	18 Sa		18 Tu		18 Su
	19 Tu	19 Th	19 Su		19 We		19 Mo ²¹
	20 We		20 Mo ⁴		20 Th		20 Tu
	21 Th		21 Tu		21 Fr		21 We
	22 Fr		22 We		22 Sa	22 Tu	22 Th
	23 Sa		23 Th		23 Su	23 We	23 Fr
	24 Su		24 Fr	24 Mo ⁹	24 Mo ¹³	24 Th	
	25 Mo		25 Sa	25 Tu	25 Tu	25 Fr	
	26 Tu		26 Su	26 We	26 We	26 Sa	
	27 We		27 Mo ⁵	27 Th	27 Th	27 Su	
	28 Th		28 Tu	28 Fr	28 Fr	28 Mo ¹⁸	
	29 Fr		29 We		29 Sa	29 Tu	
	30 Sa		30 Th		30 Su	30 We	
			31 Fr		31 Mo ¹⁴		



Your daughter has 26 school weeks left until her GCSEs begin.

Her revision needs to start now in order to make the best progress possible.

How much independent study is recommended?



The government recommends that students in KS4 should do 2-2.5 hours of independent study a day.

The top achieving students last year did around 2 hours of independent study a day.

How much independent study is recommended?



Your daughter is going to be provided with a schedule of independent study for over the half term holidays.

She will then be provided with a new schedule each week leading up to the PPEs.

Your memory



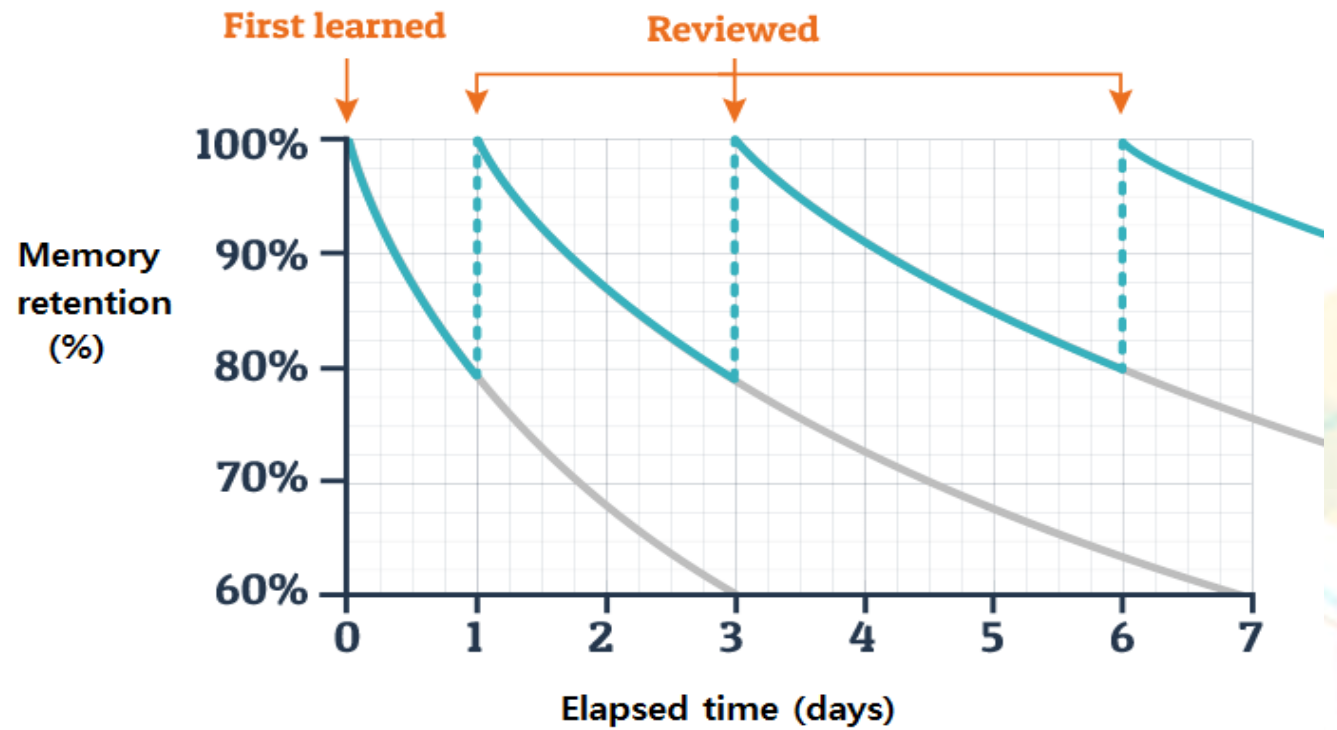
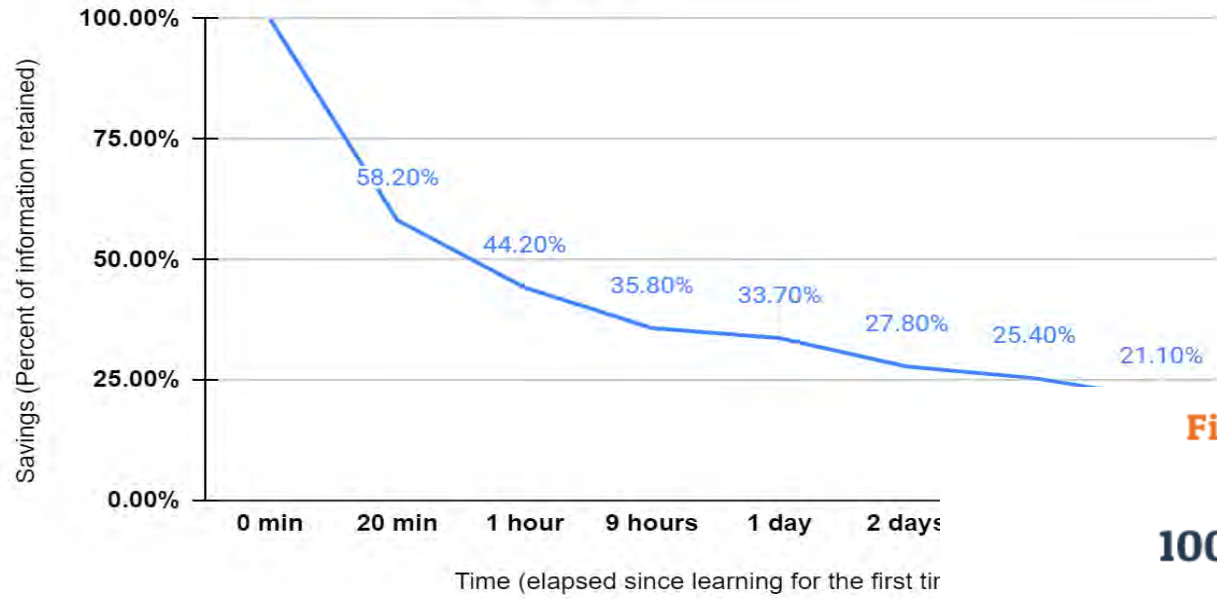
Everyone can get better at remembering information-our memories aren't fixed.



There is lots of science to support the idea that some strategies are much more effective in remembering information than others.



Ebbinghaus's learning curve



How to tackle this



CONTENT



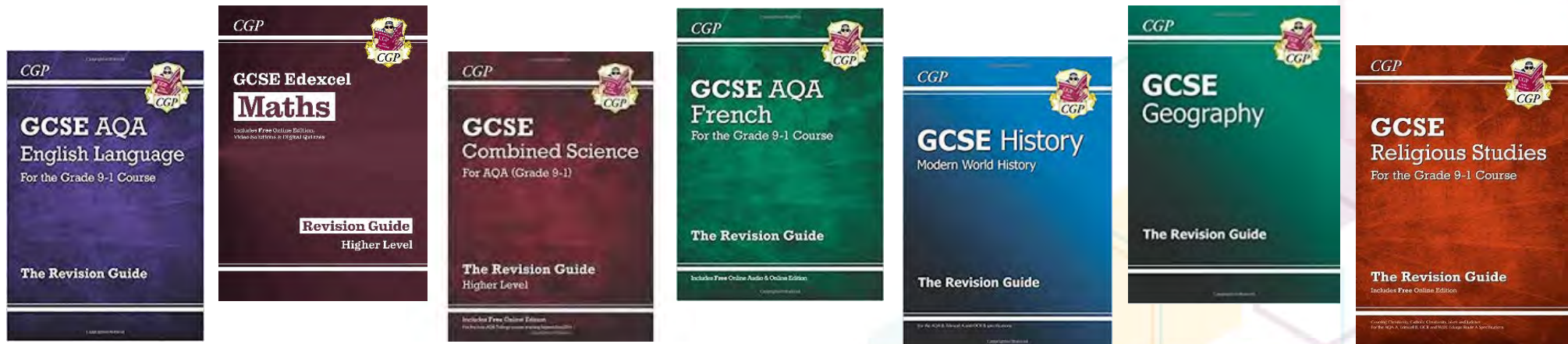
SKILLS

Resources available

Sparx Maths



Educake



Content: Flashcards



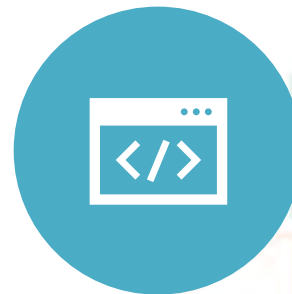
We are going to encourage you and your daughter to make flashcards to support their revision.



Making flashcards is not revision. Testing themselves with the flashcards is. You can help with this.



You have been given 2 model flashcards for Science and math's in your bags.



We are going to make one together now, and use them for English...



Practise

You are going to test your daughter.

Provide her with the prompt on the front

She should provide all the answers on the back

Remind her of anything she missed.

Repeat!

**A reminder:
support your
daughter to
have...**

Looked, covered, written, checked?

Have someone test you or tested yourself?

Set aside some time to practise the skills?

Repeated?



What now?



Some of you may have a slip, directing you to a room below, but feel free to drop in, and ask some questions.

A073 - Mrs Zarar and Mrs Connolly are available to discuss any additional needs your daughter may have.

A076 - Mr Mustafa is available to talk attendance

A077 - Mr DaSilva(Head of Year) and Ms Bakare are available to discuss any concerns or answer any questions you may have.

A086 - Mrs Moloney is available to talk about support with students wellbeing.

Main reception - Mr Mycock is available to answer any questions you may have regarding WR sixth form and progression to college.

Thank you

